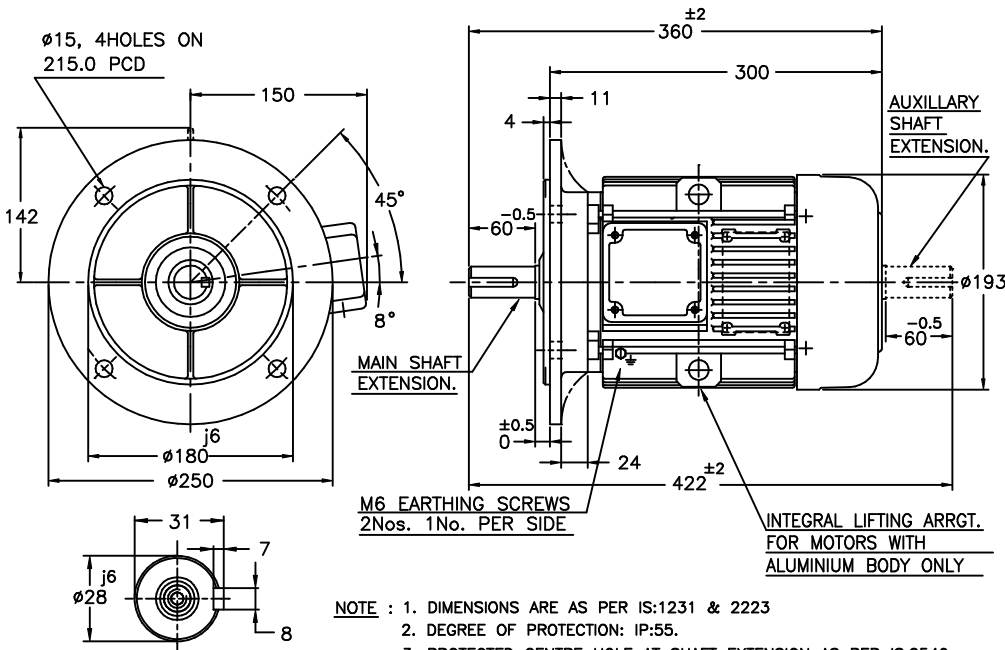


UNMENTIONED TOLERANCES

LINEAR DIMENSIONS (SUPTO MACHINED) / TOL.	0	6	315	1000
ABOVE	±0.2	±0.5	±0.8	±1.2
ANGLES	± 1/2°			

ALL INFORMATION CONTAINED IN THIS DOCUMENT IS CONFIDENTIAL AND THE PROPERTY OF KIRLOSKAR ELECTRIC CO.LTD. REPRODUCING OF THESE IN ANY FORM IS TO BE DONE WITH THE SPECIFIC PERMISSION OF THE COMPANY.

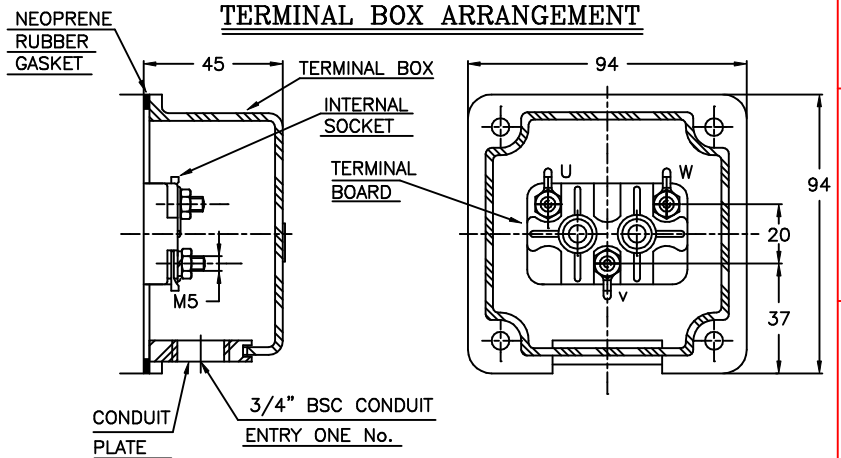
**DIMENSIONAL DRAWING**



- NOTE :**
1. DIMENSIONS ARE AS PER IS:1231 & 2223
  2. DEGREE OF PROTECTION: IP:55.
  3. PROTECTED CENTRE HOLE AT SHAFT EXTENSION AS PER IS:2540. "M10 X 24" FOR 'D' - Ø28
  4. TERMINAL BOX CAN BE ROTATABLE THROUGH 360° IN STEPS OF 90°.
  5. KEY & KEYWAY ARE AS PER IS:2048 & TOLERANCE ON KEYWAY IS P9.

**DETAILS OF MAIN & AUXILIARY SHAFT EXTENSION**

**TERMINAL BOX ARRANGEMENT**



**NOTE:** MAX. CABLE SIZE : MAIN-1x3Cx6 sqmm.

SURFACE ROUGHNESS (MAX) AS PER KSD-02-027

RM	50	12.5	25	1.6	3.2	6.3	0.2	0.4	0.8	0.025	0.05	0.1
OLD	▽	▽	▽	▽	▽	▽	▽	▽	▽	▽	▽	▽
NEW	▽	▽	▽	▽	▽	▽	▽	▽	▽	▽	▽	▽

UC: UNMENTIONED CHAM: R<sub>a</sub> 0.4

REV.	1	ZONE	-	DCN.No.	0122209	BRIEF RECORD	REDRAWN IN A NEW FORMAT.	Sd/-	10/01/09	PRINTS ISSUED TO	QA PRODUCTION mktg
8	7	6	5								

**Z122610100JR**

THIS SUPERSEDES ..... FROM dt ..... AS PER DCN No.....  
 THIS SUPERSEDED BY ..... FROM dt ..... AS PER DCN No.....

MATERIAL SPECIFICATION	RAW MATERIAL SIZE	WEIGHT kg	SCALE		
-	-	RM FIN.	1:1	1:1	
CASTING/FAB REF.		No.P.S.:-	NTS		
USED ON		REDRAWN	CHECKED	STANDARD	APPROVED
BPM100L		sd/-	sd/-	sd/-	sd/-
TITLE: DIMENSION SHEET		dt:10/01/09	dt:10/01/09	dt:10/01/09	dt:10/01/09
KIRLOSKAR ELECTRIC COMPANY LTD. HUBLI-580030 (INDIA)		SHEET ONE OF ONE			

FORM No. 02 201 02B (ISSUE 7)